

Ace Chair

STANDARD FEATURES

- High Back Seat for Added Comfort
- High Quality and Resilient Molded Ergonomic Seat Foam
- Flex Back Brackets for Motion Back
- Durable Protective Edge on Back
- Heavy Duty 1" Square Tube Steel Leg
- Single 6" Bracket



DIMENSIONS

Height:	37.5"
Width:	19"
Depth:	24.5"
Seat Height:	18"

OPTIONS

- Two-Toned Back
- Powder Coat Color
- Double 3" Brackets
- Back Handle (6" Bracket Required)
- Chair Back Logo Embroidery

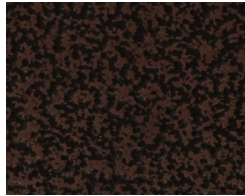


Standard Finishes

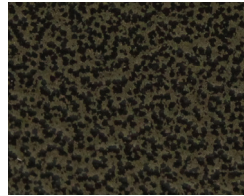
POWDER COAT



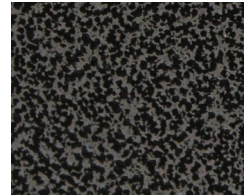
Antique Gold



Antique Copper



Antique Bronze



Antique Silver



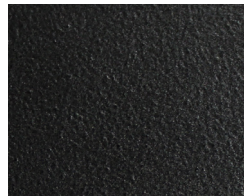
SCI Black Matte



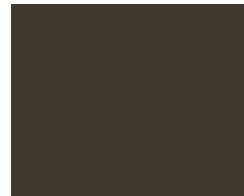
SCI Gun Metal



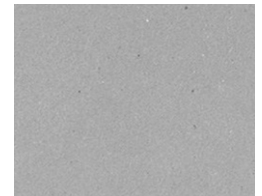
SCI Black Texture



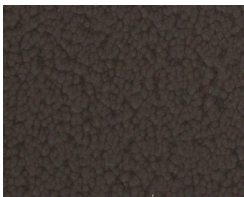
SCI Blacken Steel



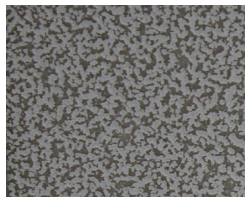
SCI Bronze



SCI Silver Chrome



Sepia



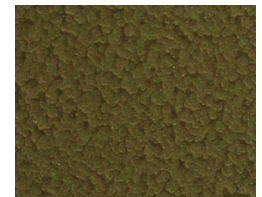
White Hybrid



Light Silver



Black



Gold Brown

VINYL & WOVEN FABRICS

All vinyl and woven colorways of CF Stinson serve as standard fabric for all Maxx Seating chairs. Available patterns and hues can be found at www.cfstinson.com under *Vinyl & Non PVC*.